



Kongphop Frozen Foods Co., Ltd.

95 Moo 3, Ekachai Road, Na Di, Mueang Samut Sakhon,
Samut Sakhon, 74000 THAILAND
Tel. (66 34) 833 403 thru 5 Fax. (66 34) 833 410, 834 015
Email : info@kongphop.com
www.kongphop.com





was established in 1991. We've been recognized as one of Thailand's major processors and exporters of frozen seafood products ranging from Vannamei, Black Tiger, Freshwater Shrimp, Squid, Octopus, Cuttlefish to various Value-Added Products serving customers around the world.



Our Core Value

Through many years of growth and success, KPF has strove for the company's core value "Freshness, Cleanliness, Consistency, Punctuality and Reasonable Price". Consequently, we keep providing the products with quality and value to fulfil the customers' needs.

Our Guarantee

At KPF, we do business to a high standard enabling us to fulfil our obligations to meet the international requirements. The strict quality control actions are taken by our well-trained inspectors through all the production process. These are all backed up by our achievements of standard certification as a guarantee of freshness and quality as follows:

GMP
CERTIFIED

HACCP
CERTIFIED

ISO
9001
CERTIFIED

BAP
CERTIFIED

BRC
CERTIFIED

Quality Control / QC

Our quality control prevents the risk of food contamination and to assure the quality of food in every aspect.



The controlling points are set at every stage as follows:

1. Raw material control.
2. Process control.
3. Finished product inspection whereby standard physical and biological examinations take place at each point.
4. Prior to the distribution, product's temperature and package are controlled and well checked.



Quality Controlling Measures

♦ Physical controlling

This is done at the receiving point of raw materials and at the stage of finished products whereby glass, plastic, metal or unqualified raw materials are detected and removed.

♦ Microbiological controlling (Microbes)

The product will be verified for its Microbes and Phatogens-free throughout the production process.



♦ Chemical controlling (Antibiotic)

Screening and selecting raw materials from the approved sources to ensure the qualified product.

♦ Traceability

Capable of tracking and identifying individual material information from their sources as products will be labeled with their status and codes for tracking and traceable purpose.



Moving forward

We're proud to expand our operation and success in a sustainable way. We move forward to bring value to both our business and our customers in worldwide market covering major regions such as Asia, Europe, North America, Australia, South America and South Africa.

“A WIDE SELECTION
Select the best value for your needs.”

To satisfy different needs of customers, we offer a wide range of seafood products covering a variety of demands and focusing on two major groups which the value-for-money products are guaranteed;

- Raw / Blanched / Cooked Products
- Value-Added Products



SHRIMPS

RAW / BLANCHED / COOKED



▲ Head-On Shell-On



▲ Headless Shell-On



► Easy Peeled Headless Shell-On



▲ Peeled Deveined Tail-On



▲ Peeled Undeveined Tail-Off



▲ Peeled Deveined Tail-Off



▲ Cooked Peeled Deveined Tail-On



▲ Cooked Peeled Undeveined Tail-Off



▲ Sushi Ebi

Vannamei Shrimp (Litopenaeus vannamei)



Black Tiger Shrimp (Penaeus monodon)



▲ Head-On Shell-On



► Headless Shell-On



▲ Peeled Deveined Tail-On

Freshwater Shrimp (Macrobrachium rosenbergii)



◀ Head-On Shell-On

A WIDE SELECTION
Select the best value for your needs.

Pink Shrimp
(*Metapenaeus affinis*)



▲ Head-On Shell-On

• Vannamei / Black Tiger / Freshwater Shrimp		• Farm Raised / Cultivated / Aquacultured	
Type	Product Description	Unit	Size (Count)
Raw	Head-On Shell-On / Whole Round (HOSO)	pc/kg.	U/5 6/8 8/12 13/15 16/20 21/30 31/40 41/50 51/60 61/70 71/80 81/100 100/120
Blanched	Headless Shell-On (HLSO)	pc/lb.	8/12 13/15 16/20 21/25 26/30 31/35 36/40 41/50 51/60 61/70 71/90 91/110
Cooked	Easy Peeled Headless Shell-On (EZ)	pc/lb.	16/20 21/25 26/30 31/35 36/40 41/50 51/60 61/70 71/90 91/110
	Peeled Deveined Tail-On (PDTO, CPDPTO)	pc/lb.	16/20 21/25 26/30 31/35 36/40 41/50 51/60 61/70 71/90 91/110
	Peeled Pin-Deveined Tail-On		
	Peeled Deveined Tail-Off (PD, CPD)	pc/lb.	16/20 21/25 26/30 31/35 36/40 41/50 51/60 61/70 71/90 91/110
	Peeled Pin-Deveined Tail-Off		
	Peeled Undeveined Tail-On (PUDTO, CPUDTO)	pc/lb.	16/20 21/25 26/30 31/35 36/40 41/50 51/60 61/70 71/90 91/110
	Peeled Undeveined Tail-Off (PUD, CPUD)	pc/lb.	16/20 21/25 26/30 31/35 36/40 41/50 51/60 61/70 71/90 91/110 100/200
	Straightened Peeled Pin-Deveined Tail-On (Nobashi Ebi)	pc/lb. (HLSO)	21/25 26/30 31/35 31/40
	Cooked Head-On Shell-On (CHOSO)	pc/kg.	41/50 51/60 61/70 71/80 81/90 91/100 100/120
	Cooked Butterfly Peeled Deveined Tail-On (Sushi Ebi)		3L 4L 5L
• Pink Shrimp • Wild / Sea Caught			
Type	Product Description	Unit	Size (Count)
Raw	Headless Shell-On (HLSO)	pc/lb.	31/40 41/50 51/60 61/70
Blanched	Peeled Undeveined Tail-Off (PUD)	pc/lb.	31/40 41/50 51/60 61/70 71/90 91/120 100/200 200/300
	Peeled Undeveined Tail-On (PUDTO)	pc/lb.	31/40 41/50 51/60 61/70 71/90 91/120
Cooked	Peeled Deveined Tail-Off (PD)	pc/lb.	31/40 41/50 51/60 61/70 71/90
	Peeled Deveined Tail-On (PDTO)	pc/lb.	31/40 41/50 51/60 61/70 71/90



CEPHALOPODS
RAW / BLANCHED

Squid
(*Uroteuthis duvauceli* / *Uroteuthis chinensis*)



Whole Cleaned Squid ▶



▲ Squid Tubes



◀ Squid Rings

• Squid • Wild / Sea Caught			
Type	Product Description	Unit	Size (Count)
Raw	Whole Round Squid	pc/kg.	U/3 3/6 6/10 11/20
Blanched	Whole Cleaned Squid	pc/kg.	6-8" 8-10" 10-12"
	Squid Tubes	pc/kg.	U/5 U/10 11/20 21/40 41/60
	(skin-on/skin-off, wing-on/ wing-off)		
	Squid Rings	pc/kg.	21/40 41/60 61/80 61/up
	Squid Rings and Tentacles (R&T)	pc/kg.	41/60 61/up
	Squid Tubes and Tentacles (T&T)	inch	3-5" 5-8"

A WIDE SELECTION

Select the best value for your needs.

Baby Octopus (Octopus spp.)



◀ Whole Cleaned Baby Octopus

• Baby Octopus • Wild / Sea Caught

Type	Product Description	Unit	Size (Count)
Raw	Whole Round Baby Octopus	pc/kg.	5/15 16/25 26/40 41/60 61/up
	Whole Cleaned Baby Octopus (Gutted, Ink-eye-beak Off)	pc/kg.	5/15 16/25 26/40 41/60 61/up

Cuttlefish (Sepia spp.)



◀ Whole Cleaned Cuttlefish

◀ Cuttlefish Fillet

• Cuttlefish • Wild / Sea Caught

Type	Product Description	Unit	Size (Count)
Raw	Whole Round Cuttlefish	g/pc	50/100 100/200 200/300 300/500 500/up
	Whole Cleaned Cuttlefish	pc/kg.	U/5 U/10 11/20 21/40 41/60 61/up
	Cuttlefish Fillet	pc/kg.	1/2 2/4 5/7 8/12 13/15 16/20 21/30

FISH MOLLUSES CRAB



FISH

Tilapia (Oreochromis niloticus)



◀ Fish Fillet



◀ Whole Gutted, Gilled and Scaled Tilapia Fish (WGGS)

Type	Product Description	Unit	Size (Count)
Raw	Whole Round	g/pc	100/200 200/300 300/500 500/800
	Whole Gutted, Gilled and Scaled (WGGS)	g/pc	100/200 200/300 300/500 500/800
	Skinless Natural Fillet	g/pc	20/40 40/60 60/80 80/120

Seabass (Lates calcarifer)



▲ Whole Gutted, Gilled and Scaled Seabass Fish (WGGS)

▼ Fish Fillet

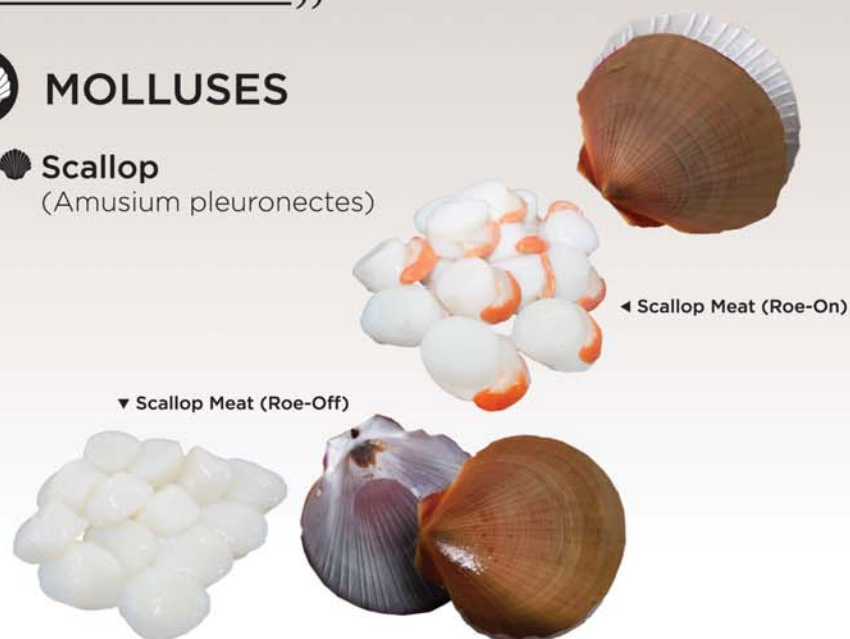


Type	Product Description	Unit	Size (Count)
Raw	Whole Round	g/pc	300/500 500/800 800/1000 1000/1300
	Whole Gutted, Gilled and Scaled (WGGS)	g/pc	200/300 300/400 400/500 500/700
	Skin-On Natural Fillet	g/pc	300/500 500/800 800/1000

“**A WIDE SELECTION**
Select the best value for your needs.”

MOLLUSES

Scallop (Amusium pleuronectes)



Type	Product Description	Unit	Size (Count)
Raw	Scallop Meat (Roe-On)	pc/lb.	21/30 31/40 41/50 51/60 61/70 71/90 91/120
	Scallop Meat (Roe-Off)	pc/lb.	21/30 31/40 41/50 51/60 61/70 71/90 91/120

Mussel (Perna viridis)



Type	Product Description	Unit	Size (Count)
Cooked	Mussel Meat	pc/kg.	100/200 200/300 300/500 500/800 800/1200

Clam (Paphia undulata)



Type	Product Description	Unit	Size (Count)
Cooked	Yellow Clam Meat	pc/kg.	500/800 800/1000 1000/1500 1500/2000 2000/2500
	White Clam Meat	pc/kg.	500/800 800/1000 1000/1500 1500/2000 2000/2500

CRAB

Soft Shell Crab (Scylla serrata)



Type	Product Description	Unit	Size (Count)
Raw	Whole Round Soft Shell Crab	g/pc	70/100 100/130 130/150 150/170 170/190
	Whole Cleaned Soft Shell Crab	g/pc	70/100 100/130 130/150 150/170 170/190

A WIDE SELECTION
Select the best value for your needs.



SEAFOOD MIX

- Ready-to-cook.
- Easy and convenient.



Type	Cooked / Blanched
No. of mix	3 4 5 6 mixes
Ingredients	<ul style="list-style-type: none"> • (CPUD, BPUD) Vannamei / Pink Shrimp • Squid Rings / Squid Tentacles / Squid Stripes • Mussel Meat / Clam Meat • Baby Octopus Slices

A WIDE SELECTION
Created with quality ingredients.

VALUE-ADDED PRODUCTS

(Seafood-based appetizer / Finger food)

Our value-added products are created with quality ingredients and cover the following items;

- Breaded Items
- Wrapped Items
- Dim Sum
- Skewer

• BREADED ITEMS



◀ Breaded Torpedo Shrimp



▲ Breaded Butterfly Shrimp



▲ Tempura Shrimp



Breaded Shrimp Cake ▶



▲ Breaded Squid Rings

Breaded Scallop ▼



▼ Breaded Fish Fillet

Type	Product Description	Unit	Size (Count)
Raw	Breaded Torpedo Shrimp	pc/lb.	16/20 21/25 26/30
Raw	Breaded Butterfly Shrimp	pc/lb.	13/15 16/20 21/25
Raw	Breaded Shrimp Popcorn	pc/lb.	41/50 51/60 61/70 71/90 91/120 100/200
Raw	Breaded Shrimp Cake	g/pc	40
Pre-fried	Tempura Shrimp	pc/lb.	13/15 16/20 21/25 26/30
Raw	Breaded Squid Rings		
Raw	Breaded Fish Fillet	g/pc	30-50

“**A WIDE SELECTION**
Created with quality ingredients.”

• WRAPPED ITEMS



▲ Spring Roll



◀ Filo Shrimp



▲ Seafood Samosa



▲ Seafood Money Bag

Type	Product Description	Unit	Size (Count)
Raw	Filo Shrimp	pc/lb	21/25 26/30 31/40
Raw	Spring Roll	g/pc	30
Raw	Seafood Samosa	g/pc	20
Raw	Seafood Money Bag	g/pc	20

• COMBINATION



Type	Product Description
Raw	Breaded Seafood Basket
	Mix of Breaded Items
Raw	Frozen Seafood Platter
	Mix of Breaded Items and Wrapped Items

• DIM SUM



◀ Shumai



◀ Hacao

Shrimp Gyoza ▶



▲ Shrimp Wonton

Dumpling Mix ▶



Type	Product Description	Unit	Size (Count)
Steamed	Shumai	g/pc	30
Steamed	Hacao	g/pc	25
Pre-fried / Steamed	Shrimp Gyoza	g/pc	20
Steamed	Dumpling Mix		
	Mix of Dim Sum		
Raw	Wonton	g/pc	12-14

• SKEWER



◀ Seafood Skewer / Shrimp Skewer